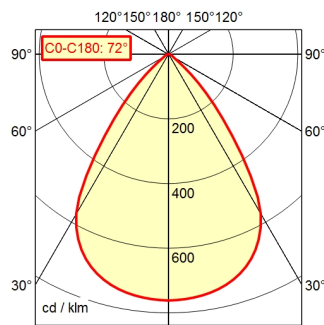


CE



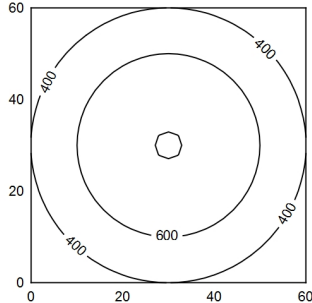
CEE 7/XVI

A60 | 100.0%       $\Phi$ : 295 lm



60 x 60 cm       $\Phi$ : 295 lm

Em: 529 lx  
Emax: 806 lx  
Emin: 194 lx



light source  
work equipment  
connected load  
power consumption  
standby  
power factor  
luminous flux  
luminous efficiency  
light distribution  
direct ratio  
beam angle  
colour temperature  
colour temperatur  
color rendering index (CRI)  
chromaticity tolerance LED  
glare control  
system of protection  
class of protection  
technology  
housing  
cover  
arm  
weight (net)  
mains lead  
fastening  
special features

LED module  
electronic plug-in transformer  
100-240 V, 50/60 Hz; secondary 5 V, DC  
env. 4 W  
env. 0,3 W  
env. 0,97  
approx. 295 lm  
approx. 74 lm/W  
direct  
approx. 100 %  
72°  
neutral white  
approx. 4.000 K  
>= 80  
< 3 SDCM  
screen  
IP 20  
II with plug-in power supply, III without plug-in  
power supply  
continuously dimmable  
plastic; untreated; umbrgr  
25  
tubular aluminium section; anodized; tubular  
section upright; titanium  
env. 0,97 kg  
approx. 1,85 m; mains plug; CEE 7/XVI  
adaptor (accessory); table clamp (accessory); table  
base  
push button in luminaire head